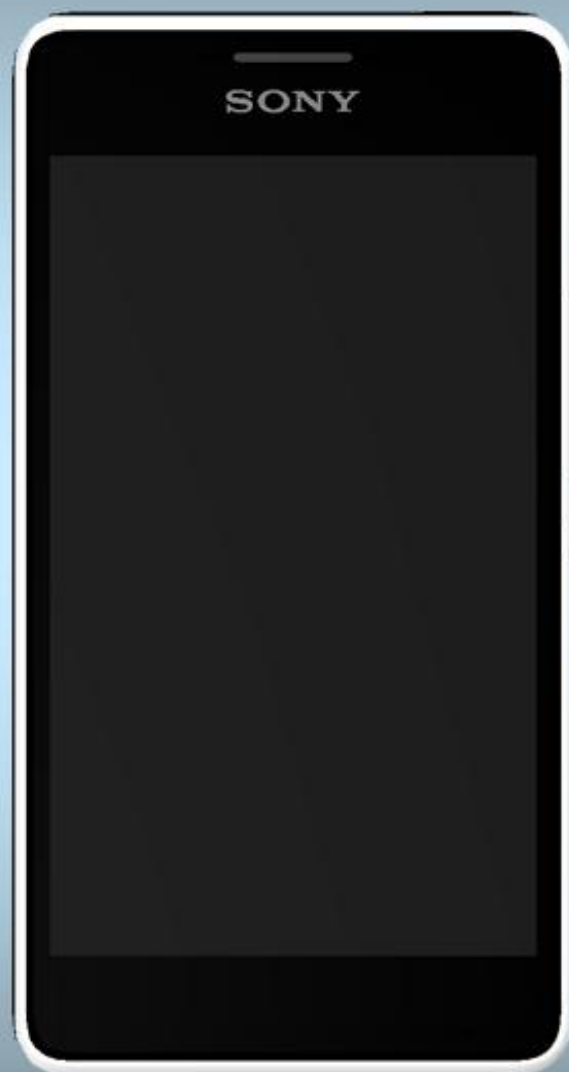


Component Replacement

- electrical -



*Xperia E1: D2005, D2004,
Xperia E1 dual: D2105, D2104, D2114*

CONTENTS

1 Replaceable Components 3

2 Component Placing..... 5

3 Additional Repair info 6

4 Revision History 10

For general information about electrical repair related issues, refer to 1220-1336: Generic Repair Manual - electrical

Test after electrical replacement: refer to 1273-1772 Mechanical Test Instruction

Do not remove shield can lids (Heat pasta are added and RF performance will be damaged)

1 Replaceable Components

EXPLANATION OF ABBREVIATIONS USED IN THE COLUMN 'COMMENTS' BELOW

COMPONENT LOCATION

P = Primary side

S = Secondary side

REPAIR METHOD

HA = Hot Air (removal & mounting)

ST = Soldering Tool (removal & mounting)

HA/ST = Hot Air for removal - Soldering Tool for mounting

BGA = BGA Station

BH = Bottom Heater

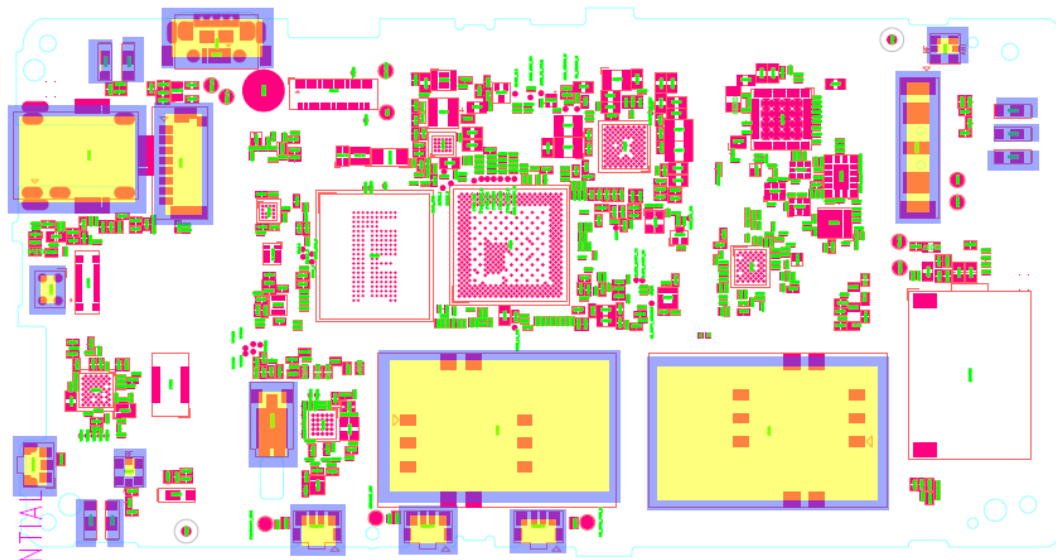
ADDITIONAL INFORMATION

⇒1 (2,3,4, etc.) = Proceed to 'Additional Repair Info' for further instructions in the indicated section(s).

Position	Component	Part no.	Comments
J4301	Ear Phone Connector	A/314-0000-00841	P HA+BH ⇨1
J5101	SIM Card Connector	A/314-0000-00867	P HA+BH ⇨2
J5102	MICRO SD Connector	A/314-0000-00842	P HA+BH or BGA ⇨3
J5103	SIM Card Connector	A/314-0000-00867	P HA+BH ⇨2
J5201	MICRO USB Connector	A/314-0000-00680	P HA+BH or BGA ⇨4
J5202	Battery Connector	A/314-0000-00844	P HA+BH or BGA ⇨5
J9201	RF Connector	A/314-0000-00282	P HA+BH ⇨6
J9701	RF Connector	A/314-0000-00282	P HA+BH ⇨7
SW5301	Switch Tact Water Proof	A/315-0000-00066	P HA/ST+BH ⇨8
SW5302	Switch Tact Water Proof	A/315-0000-00066	P HA/ST+BH ⇨9
SW5303	Switch Tact Water Proof	A/315-0000-00066	P HA/ST+BH ⇨9
SW5304	Switch Tact Side tact	A/315-0000-00047	P HA/ST+BH ⇨10
U4202	Microphone	A/312-0000-00067	P HA+BH or BGA ⇨11
U4203	Microphone	A/312-0000-00067	S HA+BH or BGA ⇨12
VIB4201	Vibrator	A/320-0000-00079	P HA+BH ⇨13
Z9201	Spring Connector	A/314-0000-00550	P HA+BH ⇨14
Z9202	Spring Connector	A/314-0000-00550	P HA+BH ⇨14
Z9203	Spring Connector	A/314-0000-00550	P HA+BH ⇨14
Z9601	Spring Connector	A/314-0000-00550	P HA+BH ⇨15
Z9602	Spring Connector	A/314-0000-00550	P HA+BH ⇨15
Z9701	Spring Connector	A/314-0000-00550	P HA+BH ⇨16
Z9702	Spring Connector	A/314-0000-00550	P HA+BH ⇨16

2 Component Placing

To access the Component Placing document, double-click the icon below.
Applicable for on-screen viewing only – icon not shown on hard-copies.



Primary side



Secondary side

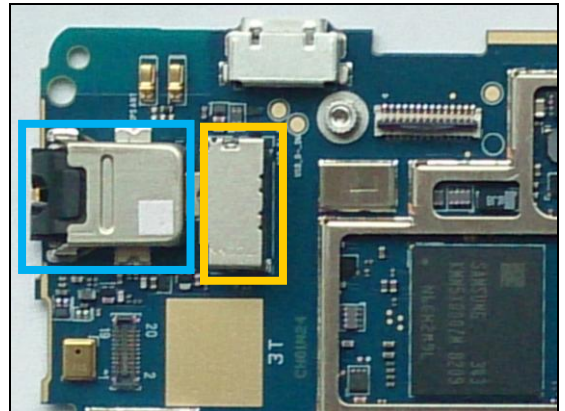
3 Additional Repair info

1

J4301

Replace if mechanical damaged. (No or bad audio in headset)

Protect the SD connector with capton tape!

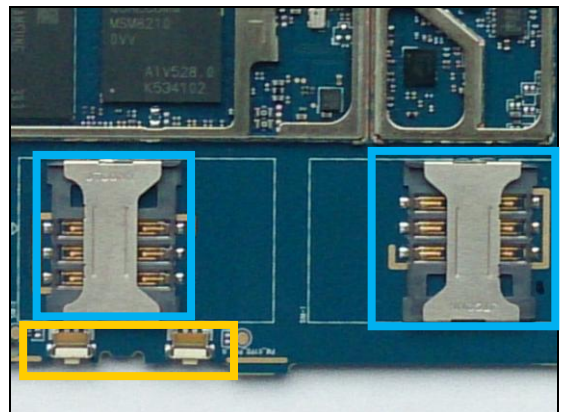


2

J5101, J5103

Replace if mechanical damaged. (SIM not inserted)

Protect the switch with capton tape!

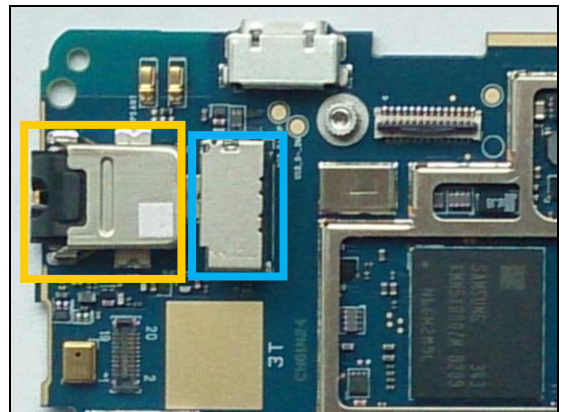


3

J5102

Replace if mechanical damaged. (No SD card inserted)

Protect the ear phone connector with capton tape!

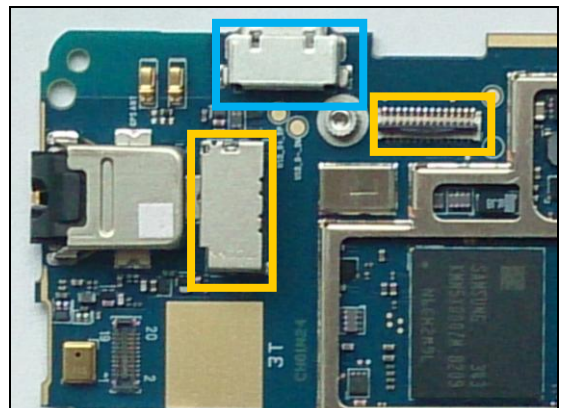


4

J5201

Replace if mechanical damaged (USB charger or data transfer not working)

Protect the SD and BtB connectors with capton tape!



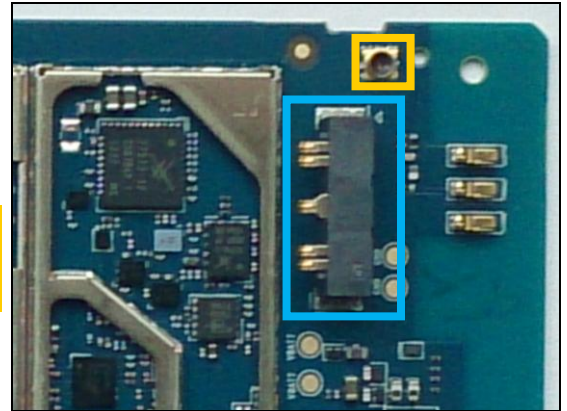
Repair Actions: Additional Repair Info

5

J5202

Replace if mechanical damaged (Phone dead or power off)

Protect the RF connector with capton tape!

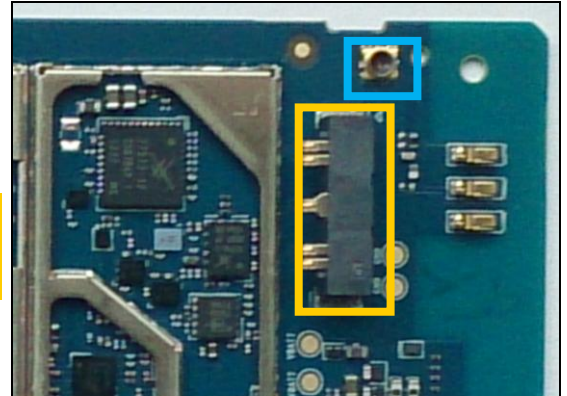


6

J9201

Replace if open circuit 1-2 (No or bad network, main antenna)

Protect the Battery connector with capton tape!

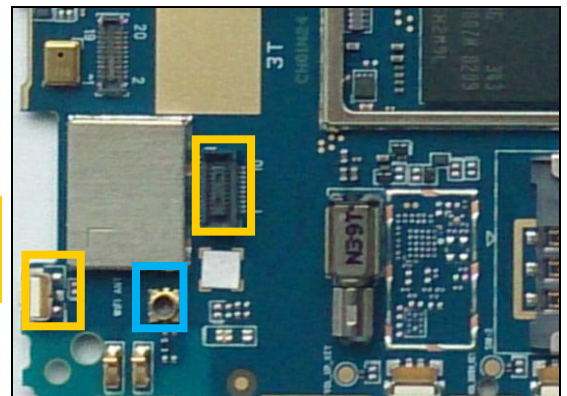


7

J9701

Replace if open circuit 1-2 (No or bad WLAN/BT)

Protect the input switch and BtB connector with capton tape!

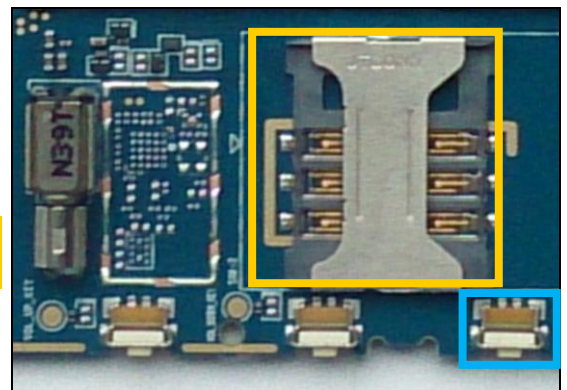


8

SW5301

Replace if mechanical damaged (Phone not power on)

Protect the SIM connector with capton tape!



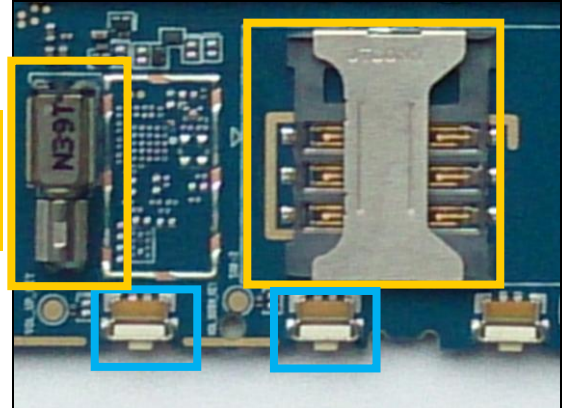
Repair Actions: Additional Repair Info

9

SW5302, SW5303

Replace if mechanical damaged (Volume up/down problem)

Protect the SIM connector and Vibrator with capton tape!

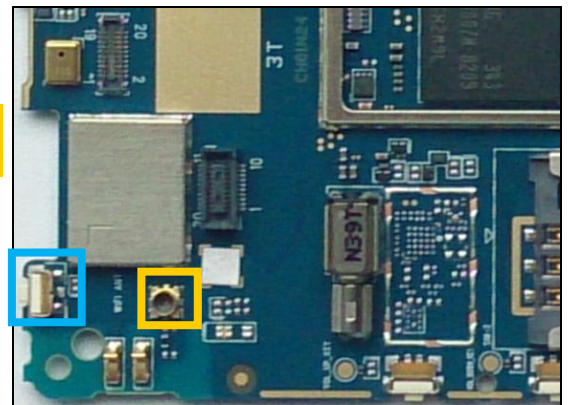


10

SW5304

Replace if mechanical damaged (MP3 key problem)

Protect the RF connector with capton tape!

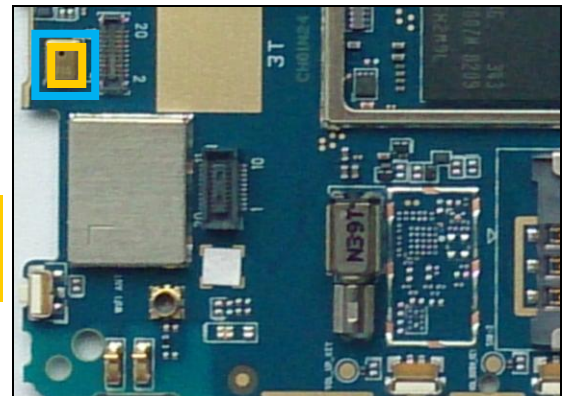


11

U4202

Replace if no audio from secondary mic

When replacing protect microphone hole with capton tape!

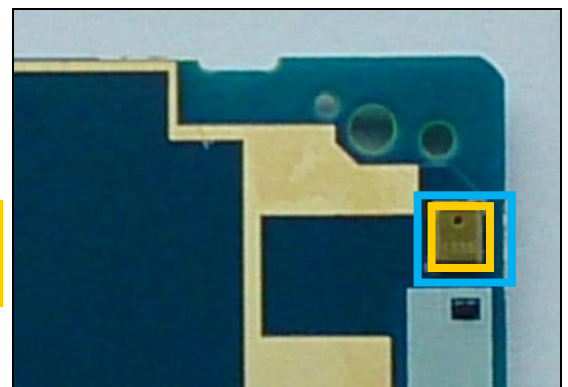


12

U4203

Replace if no audio from primary mic

When replacing protect microphone hole with capton tape!



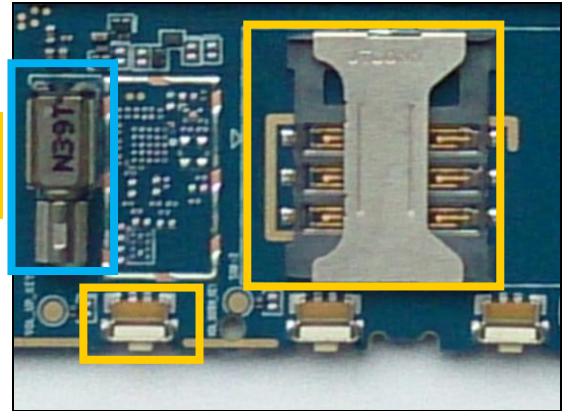
Repair Actions: Additional Repair Info

13

VIB4201

Replace if no vibration from vibrator.

Protect the SIM connector and Volume key with capton tape!

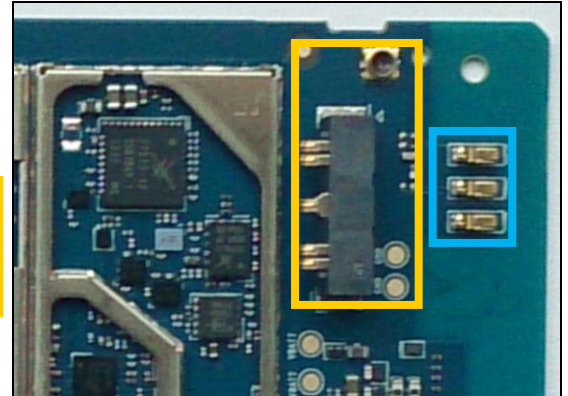


14

Z9201, Z9202, Z9203

Replace if mechanical damaged (No or bad network, main antenna)

Protect the Battery and RF connectors with capton tape!

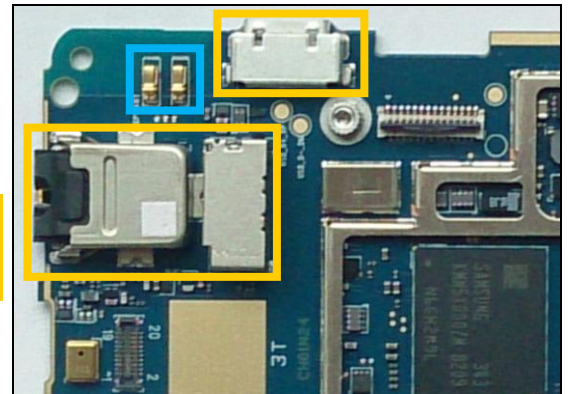


15

Z9601, Z9602

Replace if mechanical damaged (No or bad GPS)

Protect the ear phone, SD and USB connectors with capton tape!

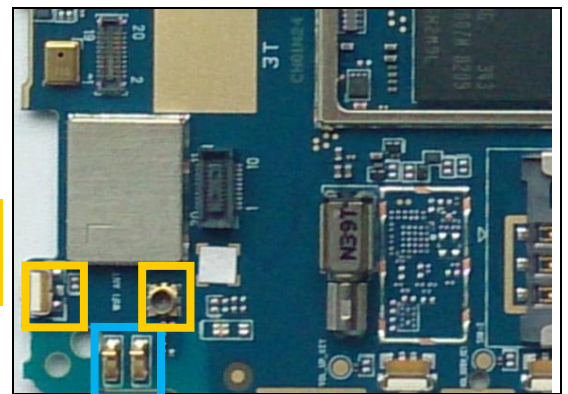


16

Z9701, Z9702

Replace if mechanical damaged (No or bad WLAN/BT)

Protect the MP3 Key and RF connector with capton tape!



4 Revision History

Rev.	Date	Changes / Comments
1	2014-06-20	Initial release